

































MURPHY
SWITCHGAUGE

Murphy

CE

FULL

LOW











56518086 30005517

AARFN
2897333
A2C53440254
Germany







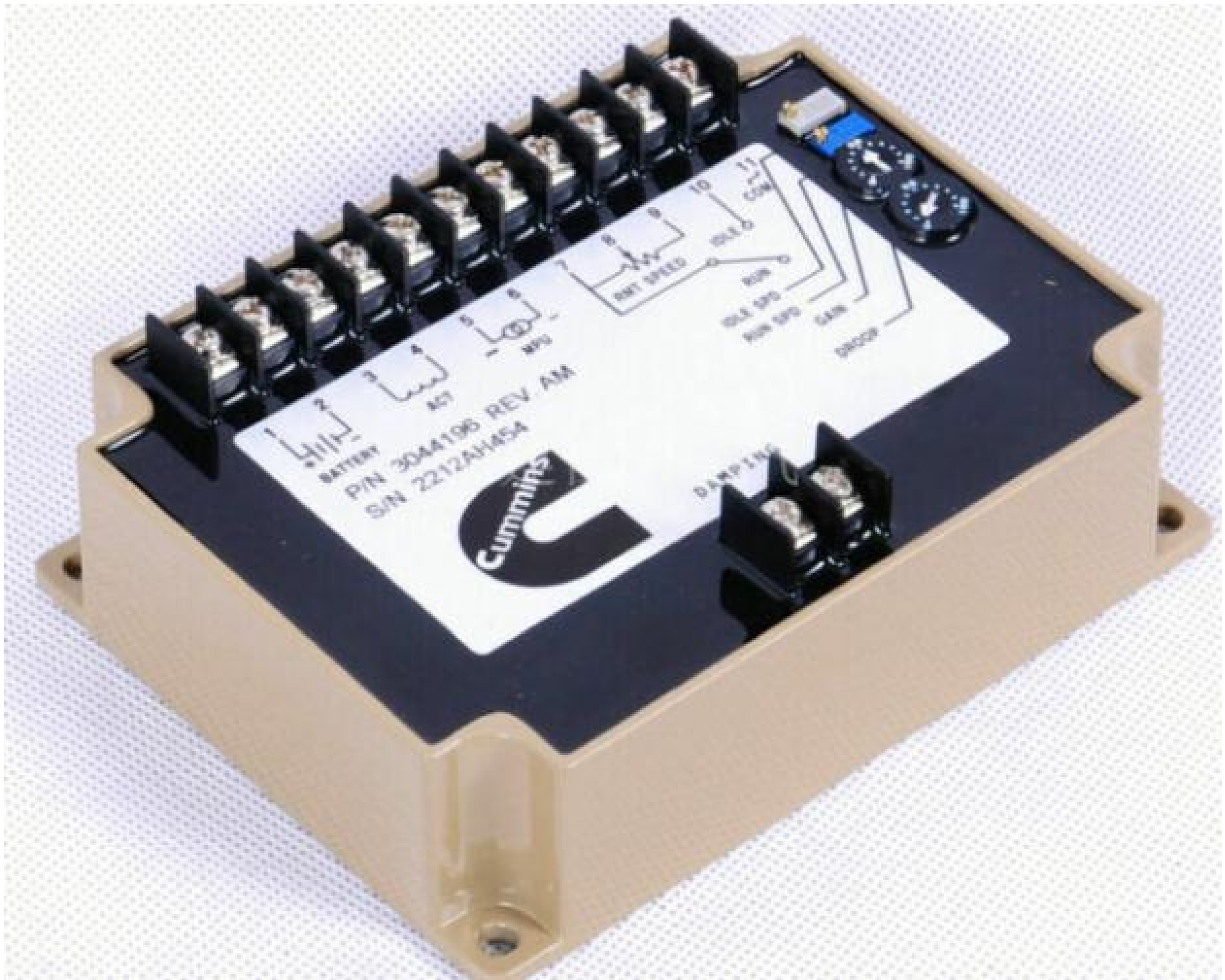












































Cummins
DIESEL
FLEET
SUPER FILTER

Cummins

Fleetguard
WF2075

ISCO
Fleetguard
ES SYSTEM
LF9009











































KEEP TIGHT

DO NOT

OPEN UNTIL

HOT

103KPA 15PSI

MEXICO







ENGINE OIL



AMERICAN PETROLEUM INSTITUTE

FOR DIESEL ENGINES

3945254

CERTIFIED
SEE OWNERS MANUAL







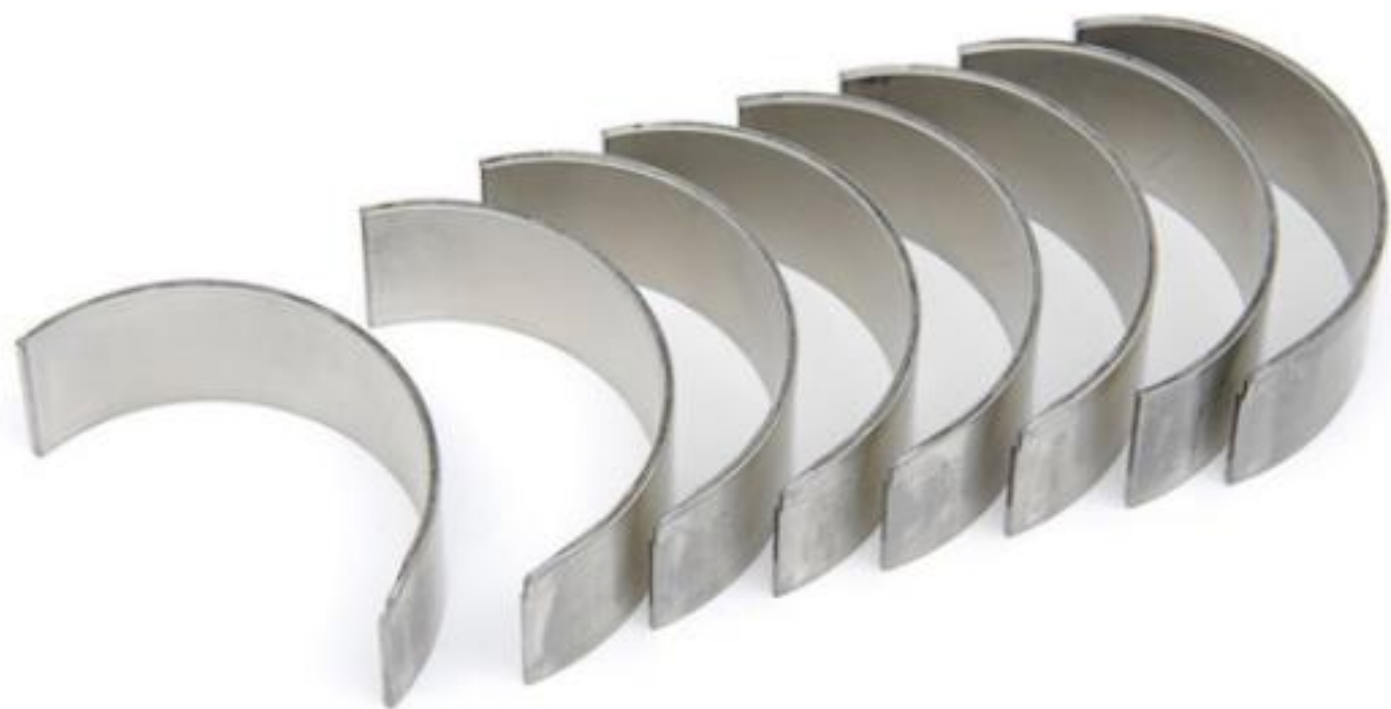
























316
1/2" NPT
1/2"













